



RD-WIFI Wireless Networking Instruction

(Smart Terminal Networking Instruction Based on RD-WIFI)

Shenzhen RuiDa Technology CO., LTD

Tel: 86- 0755-26066687

Fax: 86-0755-26982287

Web: www.rd-ac.com

E-Mail: support@rd-ac.com

Add: 1B-1, Building 5, Tian'an Nanyou Industry Area,
Dengliang Road, Nanshan District, Shenzhen, P.R.C.



CONTENTS

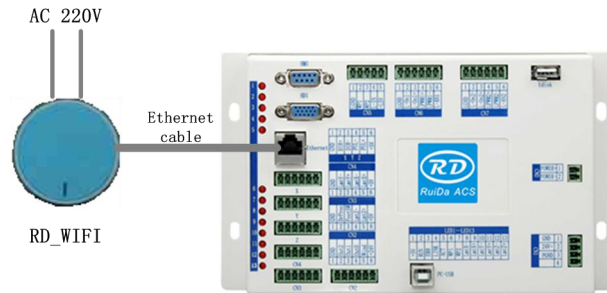
CONTENTS.....	2
Copyright Declaration.....	3
1. Network connections via wireless card or WIFI on laptop.....	4
1.1 One machine + One PC.....	4
1.2 One machine + Multiple PC.....	5
1.3 Multiple machines + One PC.....	6
1.4 Configuration:.....	6
2 Network connections via external wireless router.....	8
2.1 Multiple machines + One PC.....	8
2.2 Configured RD-WIFI terminal.....	9
3 Main board network setting.....	11
3.1 Networking without external wireless router.....	11
3.2 Networking by external wireless router.....	12

Copyright Declaration

Shenzhen Ruida Technology Co., Ltd. (hereinafter referred to as “Ruida Technology”)

All rights reserved.

1. Ruida Technology holds the patent rights, copyrights and other intellectual property rights for this product and its related software. Without authorization, none company or organization or individual is allowed to copy, manufacture, process and use this product and its relative parts directly or indirectly, otherwise shall be investigated for legal responsibility according to the law.
2. Ruida Technology is entitled to increase or reduce and modify the products and functions of this product stated herein as well as amend any documents attached to this product, without prior notification.
3. The users should peruse this manual prior to using the product stated herein, Ruida Technology shall not be responsible for the direct, indirect, special, incidental or corresponding losses or damages arising out of improper use hereof or of this product as below:
 - Users using this manual or product improperly
 - Users not follow the related safety operation rules
 - The loss caused by the forces of nature
4. The machine in operation is dangerous, so the users are obliged to design and institute the effective mechanism for error handling and safety protection. Ruida Technology shall not undertake any duties or responsibilities for the incidental or corresponding losses arising therefrom.



1. Network connections via wireless card or WIFI on laptop

1.1 One machine + One PC

In this mode, one PC connects to one wireless terminal device via wireless terminal. As Figure-1 showed:



Figure-1 One desk-top computer wireless connection diagram
(Configured WIFI network card with USB interface)

Based on above structure, configured with RuiDa motion controller and RD-WIFI smart terminal devices, and the desk-top computer with wireless card, the wireless control can be achieved between computer and machine.



Figure-2 One laptop wireless connection diagram
(Open WIFI)

Based on above structure, configured with RuiDa motion controller and RD-WIFI smart terminal devices, and the laptop with wireless card, the wireless control can be achieved between laptop and machine.

1.2 One machine + Multiple PC

Under this mode, multiple PC can send process tasks to machine, see below figure-3.

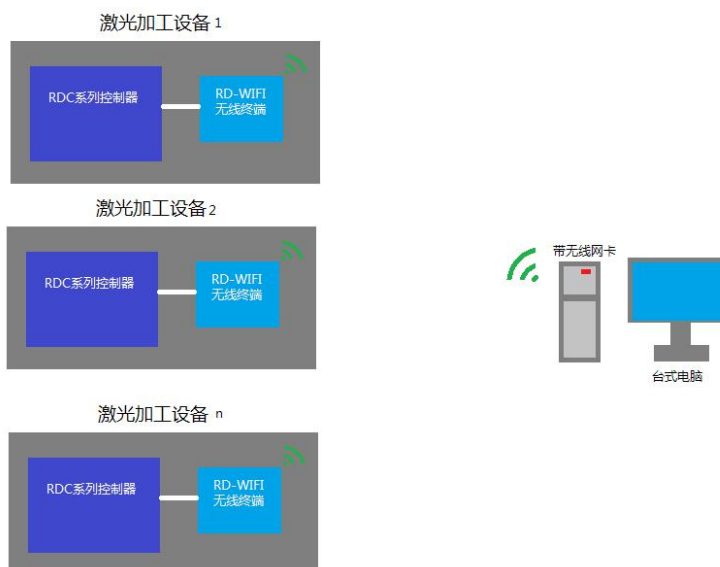


Figure-3 Multiple PC share the machine

Notes: This operating mode is different from sharing printer, due to the machine cannot do process task queue, so when multiple PC shared the machine, the previous task must be finished, otherwise it will be failed.

1.3 Multiple machines + One PC

Each wireless terminal has an independent WIFI name in this mode. So user can chose any one of WIFI to control the machine. All the machines WIFI name are listed in the wireless network. User can choose connecting the related WIFI name to control which machine.



1.4 Configuration:

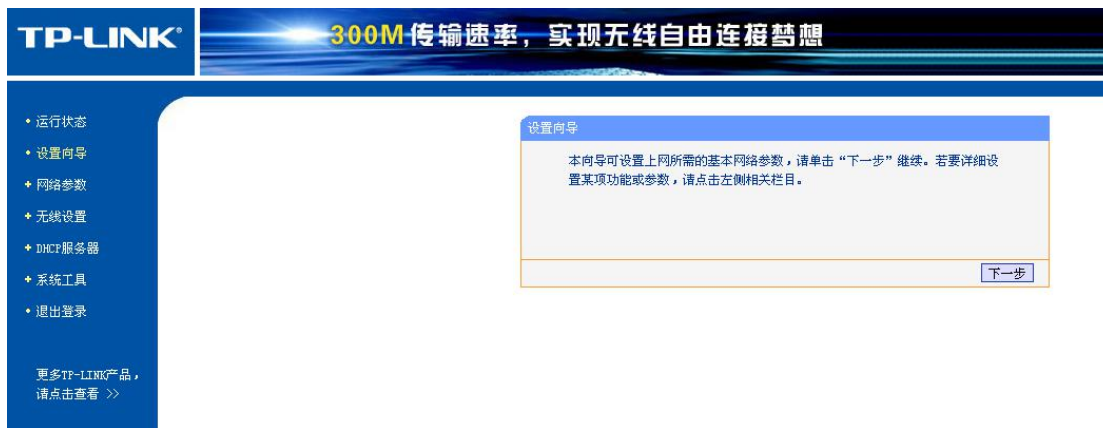
(1) Configured RD-WIFI

Connecting the computer and RD-WIFI, open the browser, input website: 192.168.1.253, and then enter into setup interface. Input user name and password:

User name: Admin

Password: Admin

Set them correctly, enter into the setup main interface, choose setup wizard, see below Figure:



Click “next”, enter into below interface, and choose AP.



Click “next”, enter into below interface:



Modify SSID to legible name, which will be showed in your wireless network. Such as: set RDWIFI0001. (Note: Each independent wireless terminal will be assigned a unique name when leave factory)

If need to set the connection password, the “wireless security option” is “WPA-PSK/WPA2-PSK”, and then input PSK password.



When configured, restart router, all the setup be effective.

(2) Configured desk-top or laptop

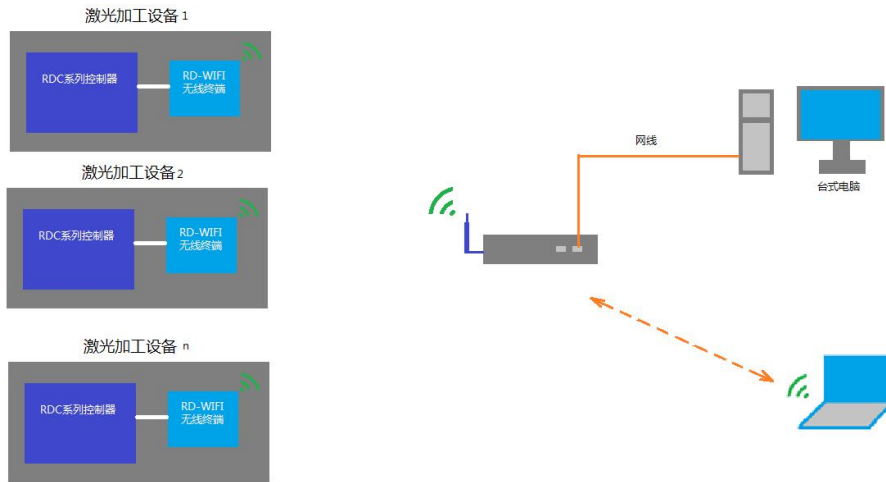
Choose the WIFI name “RDWIFI-XXX”, wireless connection showed “connected”, which means the computer and RD-WIFI smart module connected successfully, so user can use software through the host computer.



2 Network connections via external wireless router

2.1 Multiple machines + One PC

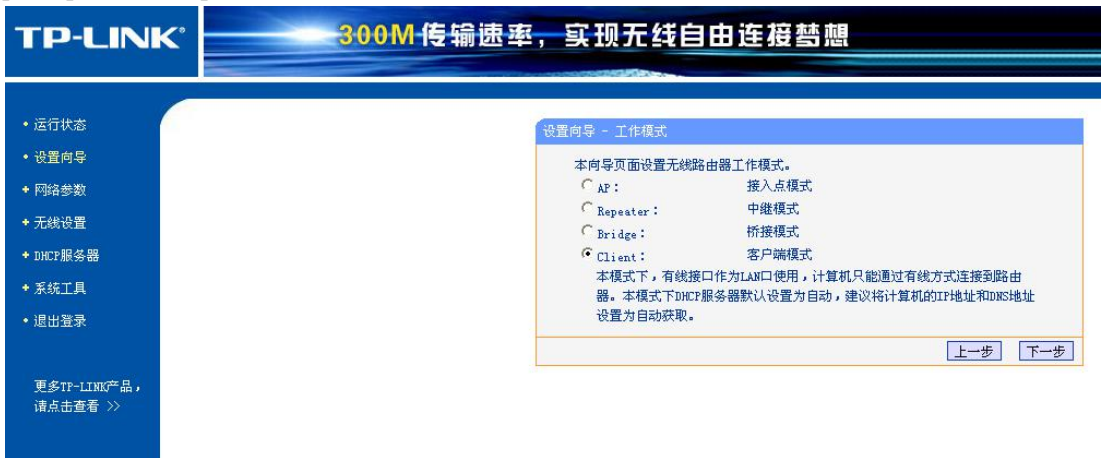
One PC can be desk-top and laptop. The connection method can be cable or wireless.



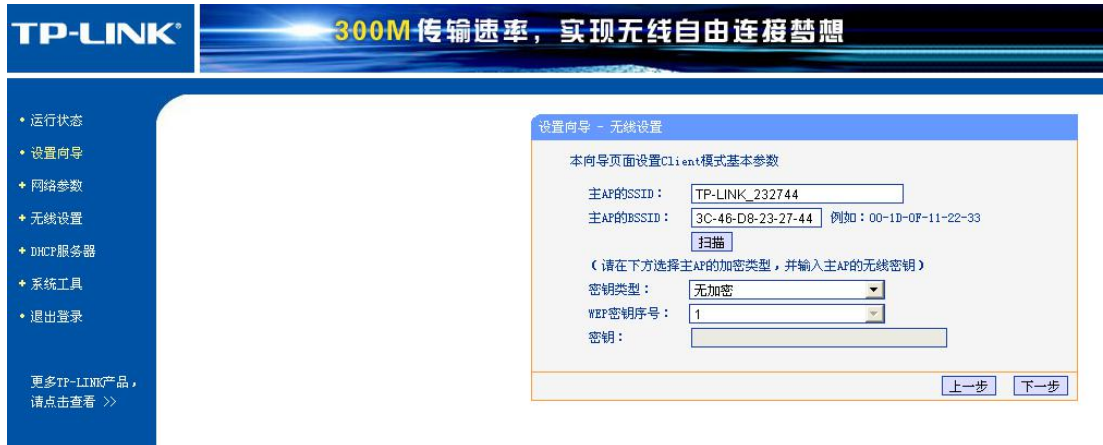
In this mode, user can provide wireless router by themselves, the router model can be commonly used.

2.2 Configured RD-WIFI terminal

Connecting the computer and RD-WIFI, input website: 192.168.1.253, below interface will be popped-up, click setup wizard, choose “Client” mode.



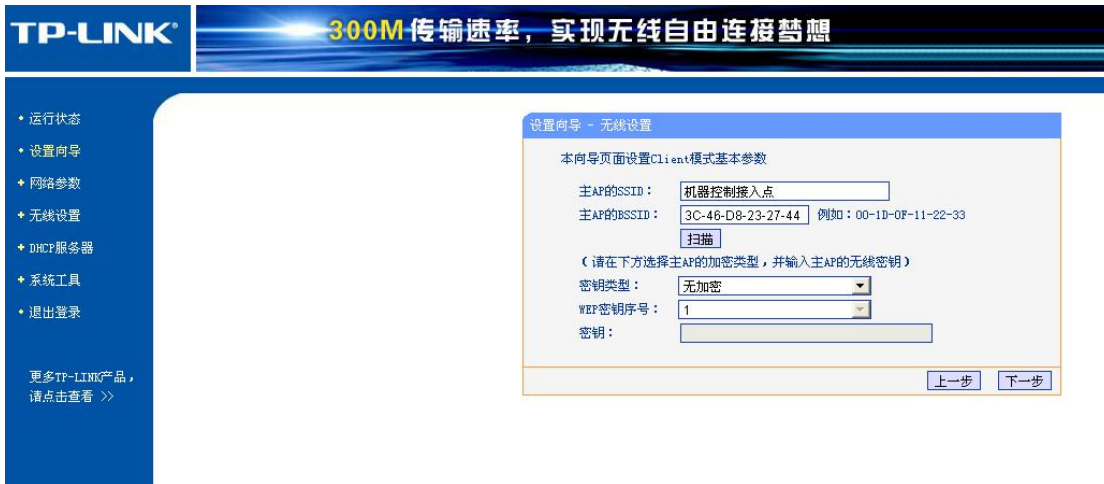
Click “next”.



Choose “scan”, configured target router. Choose the use configured router name in the wireless list. Here take “machine control AP” as example:



Click “connect”



Click “Next”



Client side is set successfully.

3 Main board network setting

3.1 Networking without external wireless router

In this mode, computer configured wireless network or module with wireless function. The wireless module IP address of host computer should be the same field to controller IP address. Such as: If the controller IP address is 192.168.1.100, user computer IP address can be 192.168.1.XX. XX cannot be 100. If there is more than one machine, different machine has different RD-WIFI name, so when one computer visits multiple machines, the controller IP address should be the same.

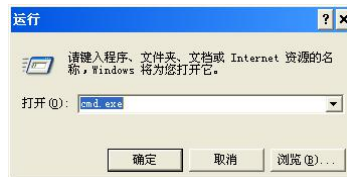
When visiting different machines, the computer should choose different wireless network name.

3.2 Networking by external wireless router

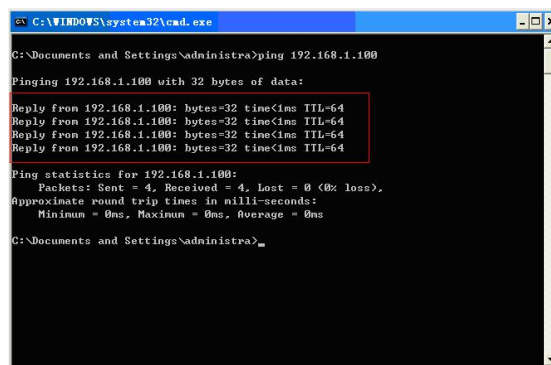
If networking by external wireless router, it is necessary to set different IP address for each connected machine. Meanwhile, there may be other network devices (computer) in this network, so the computer using a fixed IP address in network is recommended, in order to avoid connection failure for IP address conflict.

In addition, test the IP address whether be occupied:

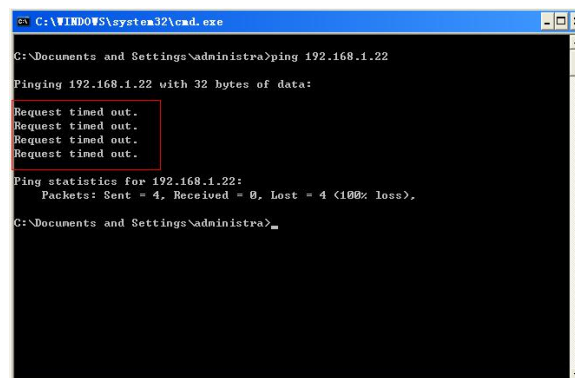
1> “start”—“run”, input “cmd.exe” in the popup dialog, and then “OK”.



2> Enter command into the popup command line: ping+ be tested IP, such as “ping 192.168.1.100”, if connected, the below picture will be popped up, received the respond information, that means connected successfully and this IP address already been occupied.



If connection failed, the time-out information will be popped up, which means this IP address is not in use.



After finished, different operations for each machine according to different IP address in machine control operation.



Thank you very much for using the product from Shenzhen RuiDa Technology!

All parts of this manual description, all rights reserved by Shenzhen RuiDa Technology Co., Ltd. Without our permission, any company or individual shall not reprint, copy or distribute the content related to this product manual. We keep the rights to revise or update the contents without notice.

If any comments and suggestions please feel free to contact us.

Phone: 0755-26066687 Fax: 0755-26982287

Website: www.rd-ac.com

Address: 1B-1, Building 5, Tian'an Nanyou Industry Area,
Dengliang Road, Nanshan District, Shenzhen, P.R.C.