



ePLC-400 Controller Firmware Upgrade Specification

Shenzhen RuiDa Technology CO., LTD

Tel: 86- 0755-26066687

Fax: 86-0755-26982287

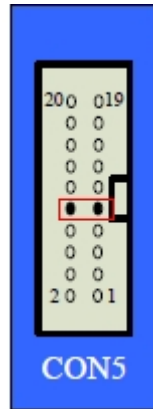
Web: www.rd-ac.com

E-Mail: support@rd-ac.com

Add: 1B-1, Building 5, Tian'an Nanyou Industry Area,
Dengliang Road, Nanshan District, Shenzhen, P.R.C.

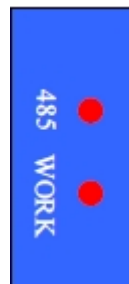
Operation Steps

Step 1: Connecting Pin 9 and Pin 10 of CON5 through jumper cap, as Picture 1 showed:



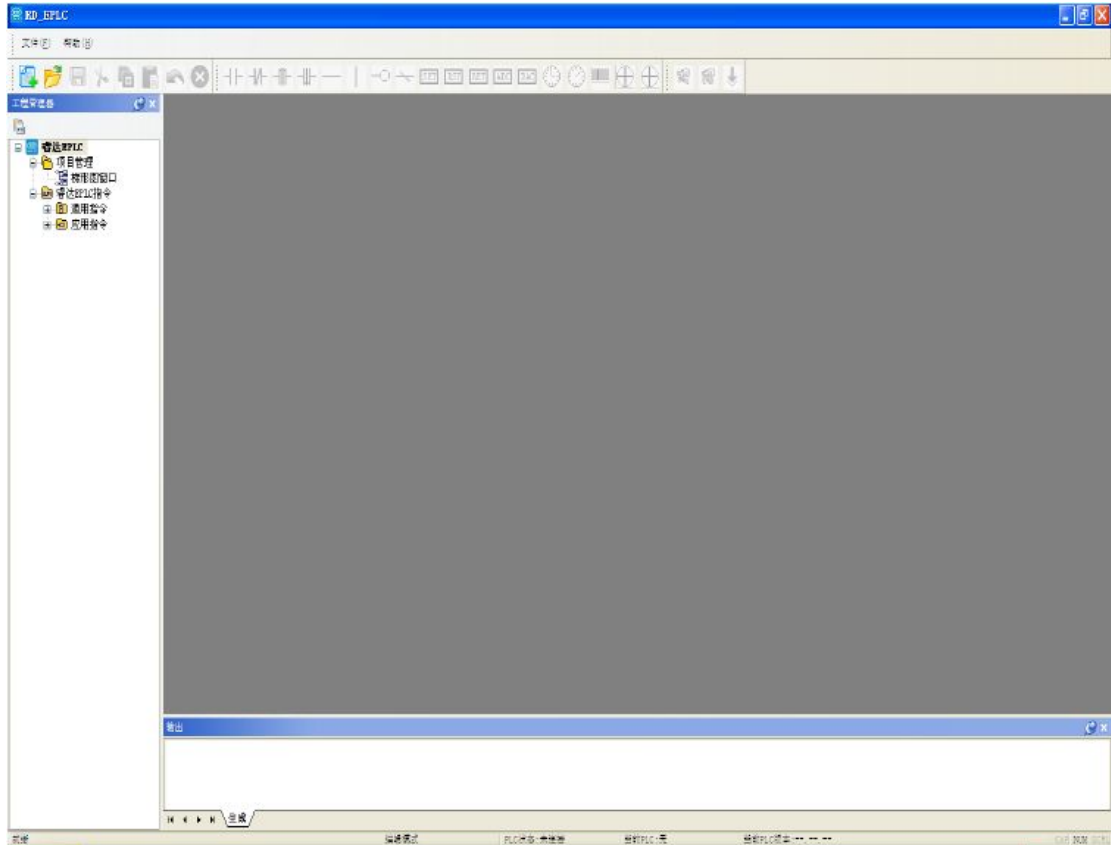
Picture 1

Step 2: Controller power on, the indicator of “485” and “WORK” flashing, the controller entering into upgrade status, as showed in Picture 2.



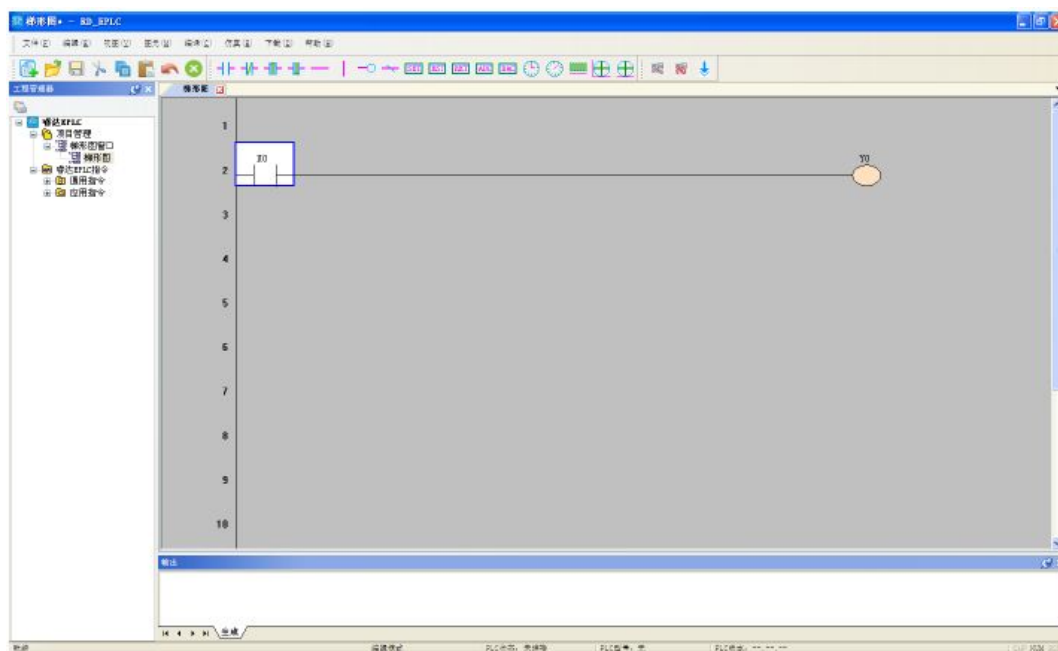
Picture 2

Step 3: Open PC software ePLC, as Picture 3 showed:



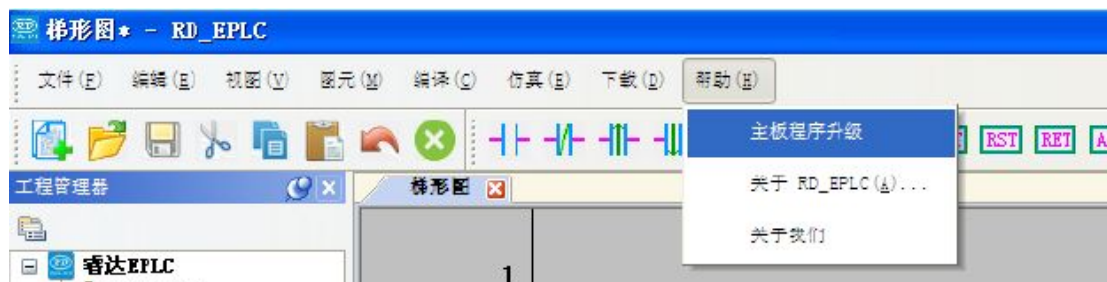
Picture 3

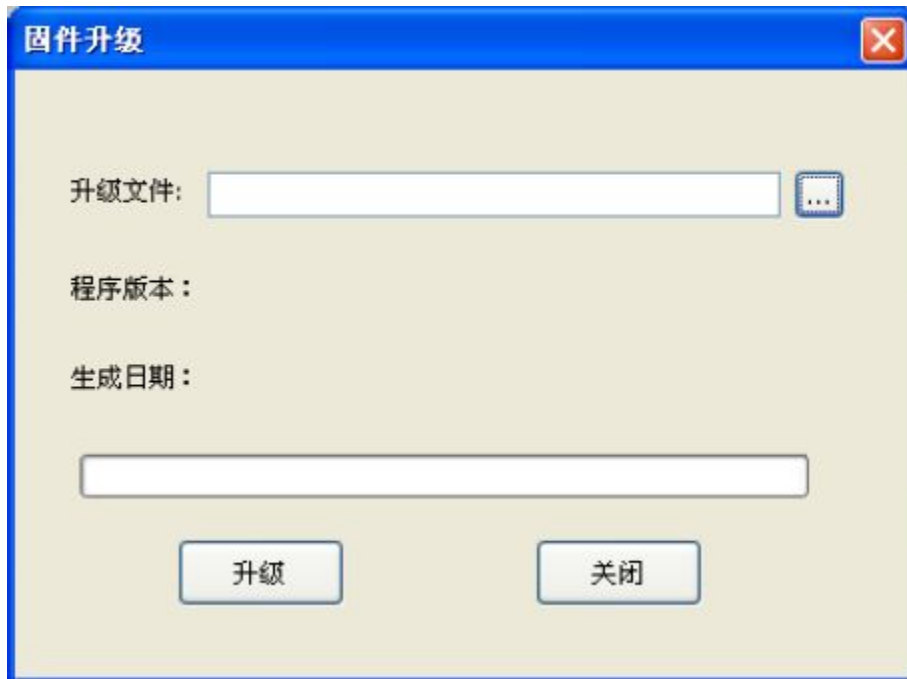
Step 4: click menu bar” file” ->“new”, to create a ladder diagram as Picture 4 showed:



Picture 4

Step 5: Connect controller and computer via USB, then click menu bar” Help” -> “controller program upgrade”, as showed in Picture 5 & Picture 6:

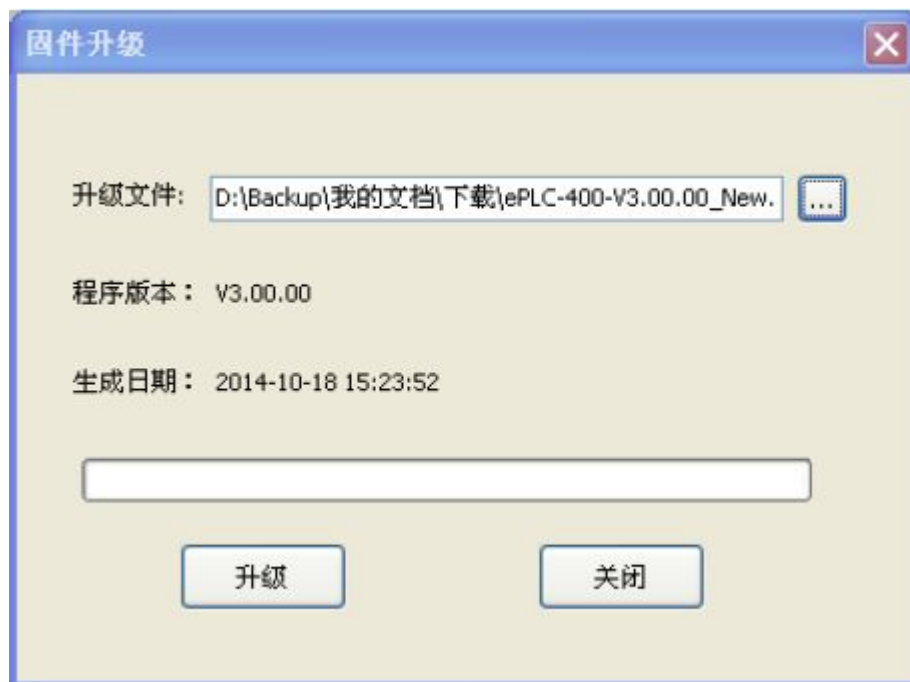




Step 6: Choose the file which need to upgrade, as shown in Picture 7& Picture 8.

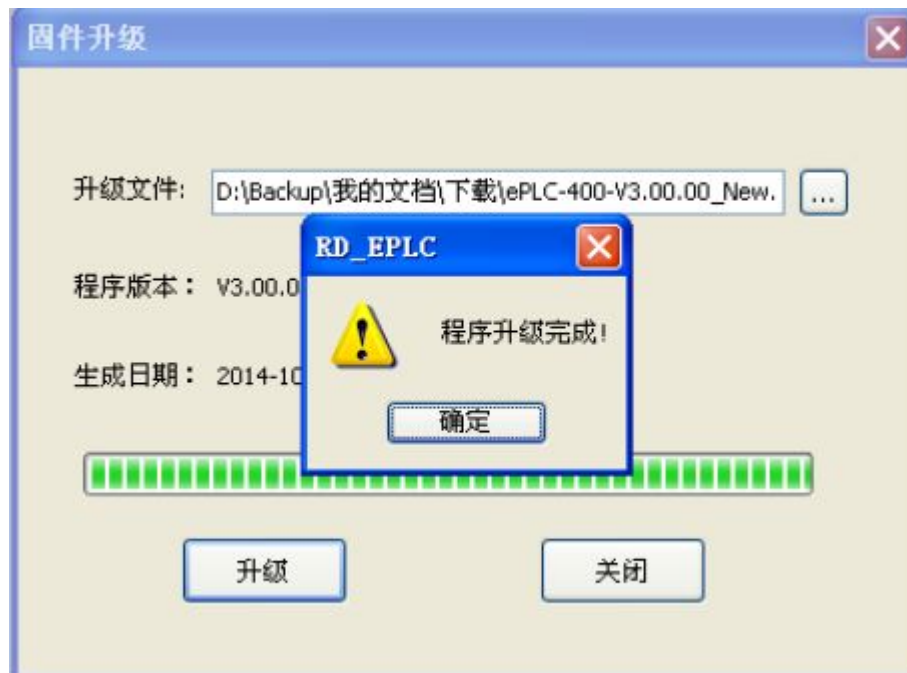


Picture 7



Picture 8

Step 7: Click “Upgrade”, start to upgrade the controller as the Picture 9 showed.



Picture 9

Step 8: Unplug jumper cap, controller re-power-on, the firmware upgrade finished.